



**REGIONAL SPECIALISED METEOROLOGICAL CENTRE-TROPICAL CYCLONES, NEW DELHI
TROPICAL WEATHER OUTLOOK**

DEMS-RSMC TROPICAL CYCLONES NEW DELHI DATED 17.12.2024

TROPICAL WEATHER OUTLOOK FOR THE NORTH INDIAN OCEAN (THE BAY OF BENGAL AND THE ARABIAN SEA) VALID FOR THE NEXT 168 HOURS ISSUED AT 0600 UTC OF 17.12.2024 BASED ON 0300 UTC OF 17.12.2024.

BAY OF BENGAL:

Yesterday's Low-Pressure Area over central parts of south Bay of Bengal lay over southwest Bay of Bengal at 0300 UTC of today, the 17th of December 2024. The associated cyclonic circulation extended up to 5.8 km above mean sea level. It is likely to become more marked and move west northwestwards towards Tamil Nadu coast during next 2 days.

A continuous watch is being maintained for further intensification and movement of the system.

Scattered to broken low and medium clouds with embedded intense to very intense convection lay over central and south Bay of Bengal and south Andaman Sea (minimum CTT minus 70-80 deg cel). Scattered low and medium clouds with embedded isolated weak to moderate convection lay over north Bay of Bengal and north Andaman Sea.

***PROBABILITY OF CYCLOGENESIS (FORMATION OF DEPRESSION) DURING NEXT 168 HRS:**

24 HOURS	24-48 HOURS	48-72 HOURS	72-96 HOURS	96-120 HOURS	120-144 HOURS	144-168 HOURS
NIL	NIL	NIL	NIL	NIL	NIL	NIL

***NOTE: EVERY 24HR FORECAST IS VALID UPTO 0300 UTC (0830 IST) OF NEXT DAY**

ARABIAN SEA:

Yesterday's upper air Circulation over southeast Arabian Sea and adjoining Lakshadweep area lay over the same region extended up to 3.1 km above mean sea level and became less marked. at 0300 UTC of today, the 17th of December 2024.

Scattered to broken low and medium clouds with embedded intense to very intense convection lay over south Arabian sea, Maldives area and adjoining Equatorial Indian Ocean (minimum CTT minus 70-80 deg cel). Scattered low and medium clouds with embedded moderate to intense convection lay over Comorin Area and isolated weak to moderate convection lay over west-central Arabian Sea.

***PROBABILITY OF CYCLOGENESIS (FORMATION OF DEPRESSION) DURING NEXT 168 HRS:**

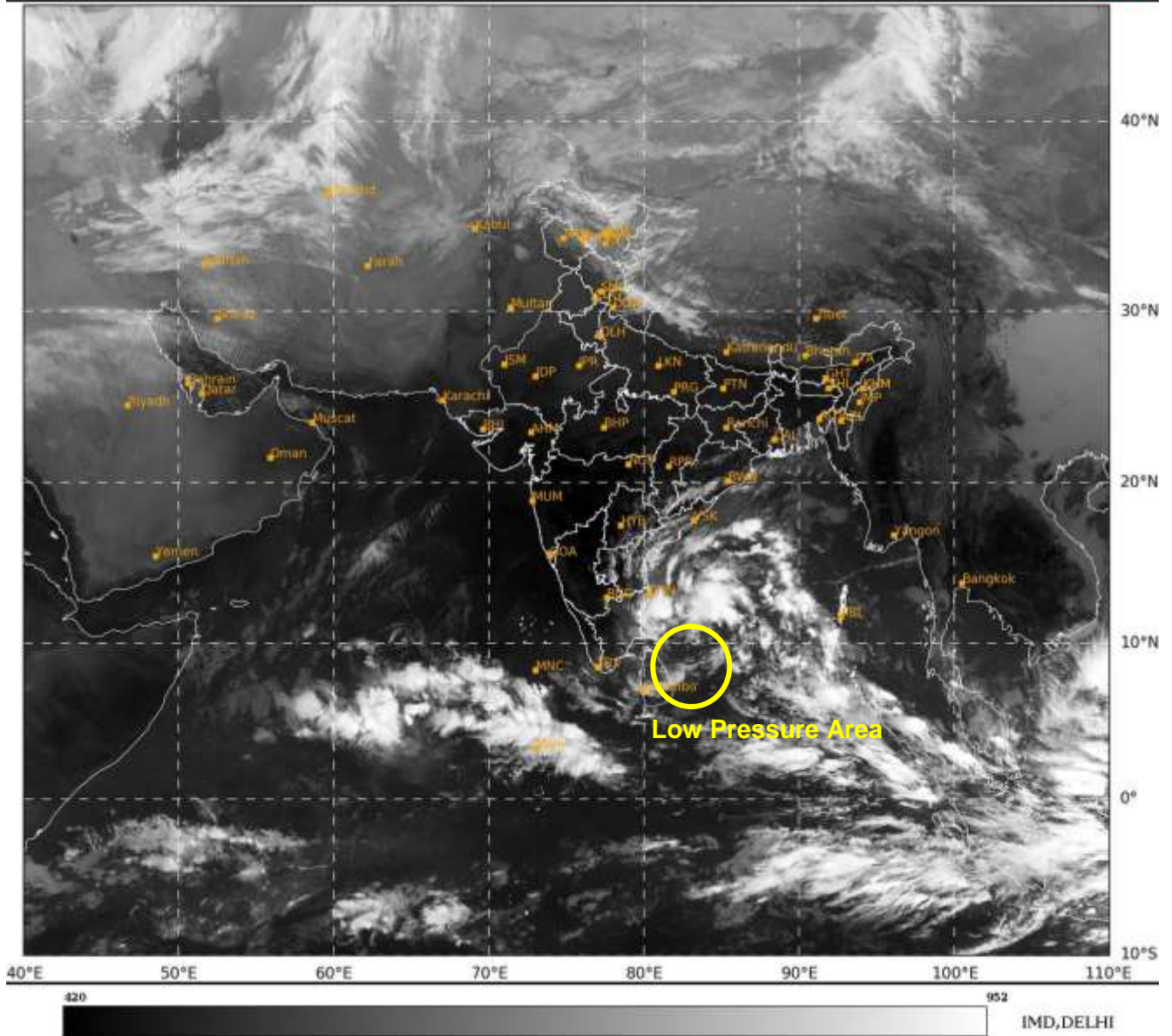
24 HOURS	24-48 HOURS	48-72 HOURS	72-96 HOURS	96-120 HOURS	120-144 HOURS	144-168 HOURS
NIL	NIL	NIL	NIL	NIL	NIL	NIL

***NOTE: EVERY 24HR FORECAST IS VALID UPTO 0300 UTC (0830 IST) OF NEXT DAY**

REMARKS: NIL

SAT : INSAT-3DR IMG
IMG_TIR1 10.8 um
LIC Mercator

17-12-2024/(0445 to 0512) GMT
17-12-2024/(1015 to 1042) IST



Cloud distribution: (a) Isolated: <25%, Scattered:25-50%, Broken: 51-75%, Solid:>75%, Convection Intensity: (a) Weak: Cloud Top Temperature (CTT) >-25°C, (b) Moderate: CTT: - 25°C to -40°C, (c) Intense: CTT: - 41°C to -70°C and (d) Very Intense: : Less than -70°C
PROBABILITY OF CYCLOGENESIS (FORMATION OF DEPRESSION):NIL: 0%, LOW: 1-33%, , MODERATE: 34-66% AND HIGH: 67-100%
This is a guidance Bulletin for WMO/ESCAP Panel Member countries. Visit respective National websites for Country specific Bulletins